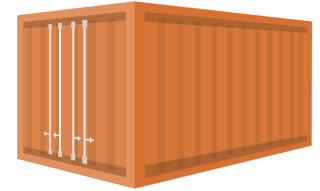


When exporting product around the world there are different shipping methods to consider. It mainly depends on the overall product packing sizes, cubic measurement, or total weight of the products to be shipped.

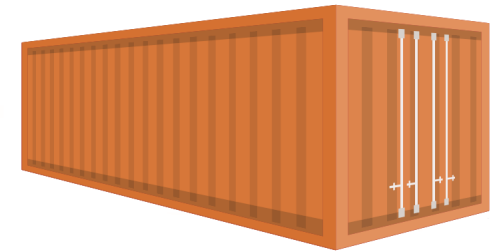
20'GP Shipping Container (General Purpose)

The 20' container is the most cost efficient way to transport the goods to your buyer. It is known as a 'Twenty-Footer' to signify the overall length of 20 feet. Products are usually packed inside cartons, then cartons stacked and wrapped onto pallets and loaded inside the container for transport. A popular way of exporting palletised cargo is 2 pallets high, 2 pallets wide, 8 pallets deep – 16 pallets total.



40'GP Shipping Container (General Purpose)

The 40' shipping container is the same design as the 20' container but just double the length. So the overall length is 40 feet and can hold double the amount of cargo.

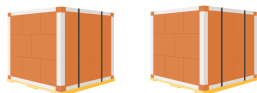


40'HC Shipping Container (High-Cube)

The 40' High Cube shipping container is the same overall length as the 40'GP but it is approximately 40cm taller than the GP. This slight increase in height allows for an extra 10-15% of cargo to be loaded inside. It also allows for some different packing methods which can fit extra cargo otherwise unable to load inside a normal 40'GP container.

LCL Cargo (Less Than Container Load)

LCL shipping is a shipping method used for smaller cargo when the overall size of the goods for export is not big enough to fill a 20' container. When LCL shipping is used, the goods are still loaded inside a 20' shipping container and transported the exact same way but the goods are loaded inside a shared shipping container along with other party's cargo to fill the container (a consolidated container). The freight cost is charged out depending on the overall product size or weight, the shipping rate will be charged out per cubic meter of cargo (m³) or per Metric Tonne (1,000kg) in weight, whichever is greater. There are more handling costs involved when shipping LCL cargo as pallets have to be loaded and unloaded more often, incurring more handling charges.



Breakbulk Cargo

Breakbulk Cargo is not a very popular shipping method as it's generally used for oversized cargo that can't fit inside shipping containers. Any cargo that exceeds the length, height or weight restrictions of a 40' container will be shipped by breakbulk cargo. Cargo is loaded on top of the deck of the vessel and has to be carefully loaded into place on the top of the deck by crane. Large machinery, boats and steel are examples of goods that are exported around the world by Breakbulk Cargo.



The most popular shipping method all over the world is the popular 20 foot long shipping container (20' container). Shipping containers are the most efficient means of transport all over the world as they are designed to seamlessly transport between trucks, trailers, port handling equipment, shipping vessels and railheads. They exist in many variations to transport different size and shaped cargo.

Dry Cargo Containers

Type	Container Weight			Interior Measurement				Door Open	
	Gross (kg)	Tare (kg)	Net (kg)	Length (m)	Width (m)	Height (m)	Capacity (m³)	Width (m)	Height (m)
20 ft	24,000	2,370	21,630	5.898	2.352	2.394	33.20	2.343	2.280
40 ft	30,480	4,000	26,480	12.031	2.352	2.394	67.74	2.343	2.280



Flat Rack Containers

Type	Container Weight			Interior Measurement			
	Gross (kg)	Tare (kg)	Net (kg)	Length (m)	Width (m)	Height (m)	Capacity (m³)
20 ft	30,480	2,900	27,580	5.624	2.236	2.234	27.90
40 ft	34,000	5,870	28,130	11.786	2.236	1.968	51.90



Refrigerated Containers

Type	Container Weight			Interior Measurement				Door Open	
	Gross (kg)	Tare (kg)	Net (kg)	Length (m)	Width (m)	Height (m)	Capacity (m³)	Width (m)	Height (m)
20 ft	24,000	3,050	20,950	5.449	2.290	2.244	26.70	2.276	2.261
40 ft	30,480	4,520	25,960	11.690	2.250	2.247	57.10	2.280	2.205



High Cube Containers

Type	Container Weight			Interior Measurement				Door Open	
	Gross (kg)	Tare (kg)	Net (kg)	Length (m)	Width (m)	Height (m)	Capacity (m³)	Width (m)	Height (m)
40 ft	30,480	3,980	26,500	12.031	2.352	2.698	76.30	2.340	2.585
45 ft	30,480	4,800	25,680	13.544	2.352	2.698	86.00	2.340	2.585



Open Top Containers

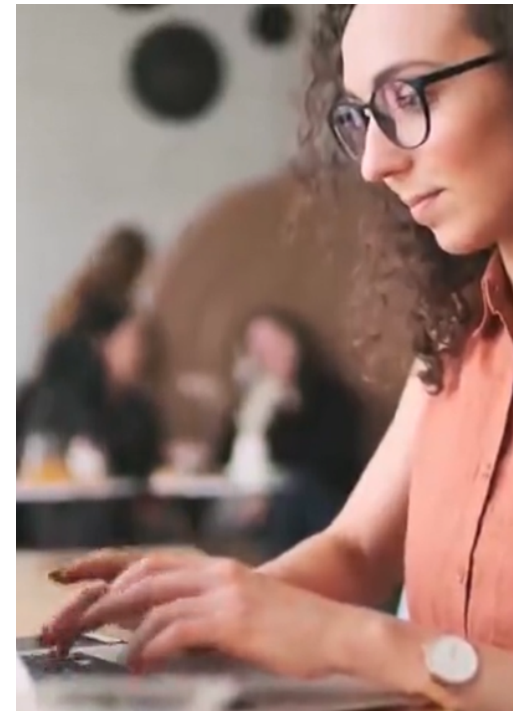
Type	Container Weight			Interior Measurement				Door Open	
	Gross (kg)	Tare (kg)	Net (kg)	Length (m)	Width (m)	Height (m)	Capacity (m³)	Width (m)	Height (m)
20 ft	24,000	2,580	21,240	5.629	2.212	2.311	32.00	2.330	2.263
40 ft	30,480	4,290	26,190	11.763	2.212	2.311	65.40	2.330	2.263



All-In-One Export Documentation Software

Centralize, digitize & automate export admin & documentation

Go paperless, eliminate errors, and save hours of manual work each shipment with your sales, shipments, and export documentation - all in one place.



The screenshot displays the Inco Docs software interface for creating a Packing List. The interface includes a sidebar with document types, a main form area, and a table at the bottom. Three callout boxes highlight key features:

- Eliminate re-entry with the Master File & ability to Autofill from connected apps:** Points to the 'Autofill from...' dropdown in the top left.
- Use stored contacts, products & snippets to save time:** Points to a contact selection dropdown in the 'Consignee' field.
- Customize templates at will:** Points to the 'Add column' button in the table header.

Streamline export documentation

Product Code	Description of Goods	Supplier	Unit Qty	Kind & No of Packages	Net Weight (Kg)	Gross Weight (Kg)	Measurements (m ³)
WP-VNL-SKG	Whey Protein (Vanilla) - Skg		2,000	Pallet x 200	5	5.04	0.000374